

1 BASEMENT FLOOR PLAN  
A3.0 1/8" = 1'-0"

### ROOM FINISH SCHEDULE

ROOM NAME	NO.	FLOOR	BASE	WALLS			CEILING		PAINT		REMARKS	
				NORTH	EAST	SOUTH	WEST	MAT'L	HT.	WALLS		CLG.
BASEMENT	001	S.C.	-	CONC.	CONC./GY.PBD.	CONC./GY.PBD.	CONC.	CONC.	9'-0"	NO	NO	NOTE 1
STAIR	A	UD.	VNYL	OPEN	GY.P. BD.	CONC.	GY.P. BD.	-	-	YES	NO	--

ROOM FINISH SCHEDULE NOTES:  
1. VNYL BASE ON GYP. BD. WALLS ONLY

### DOOR SCHEDULE

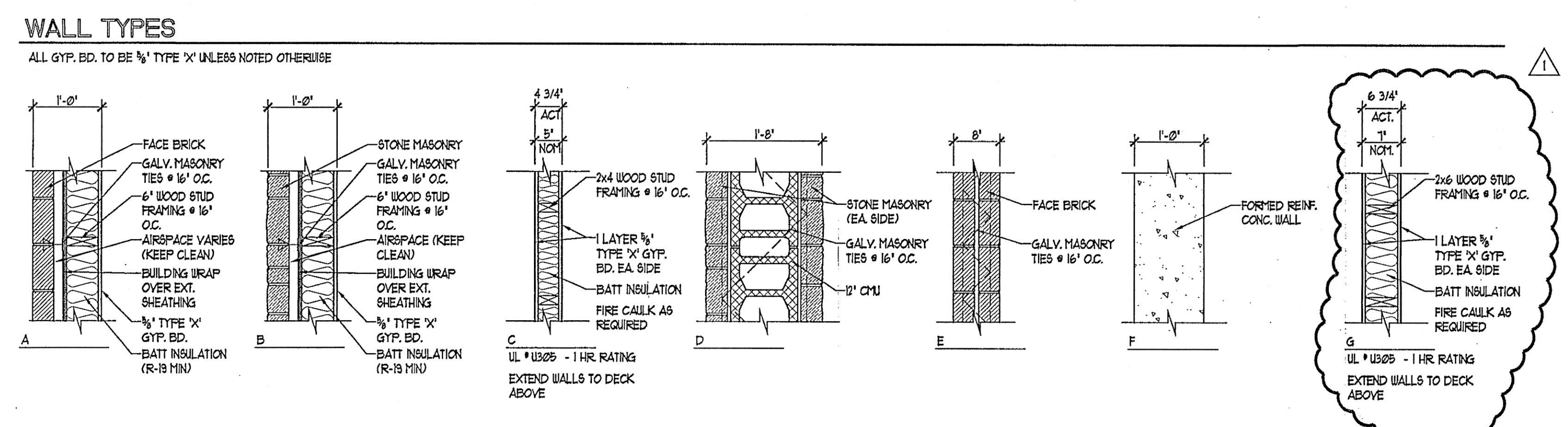
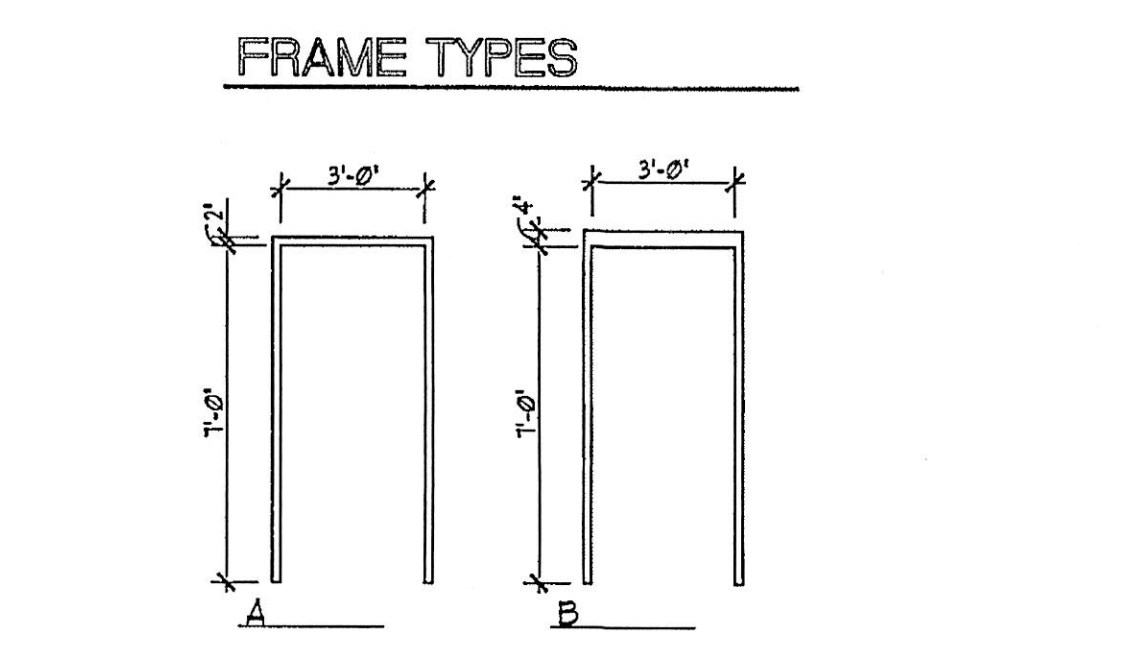
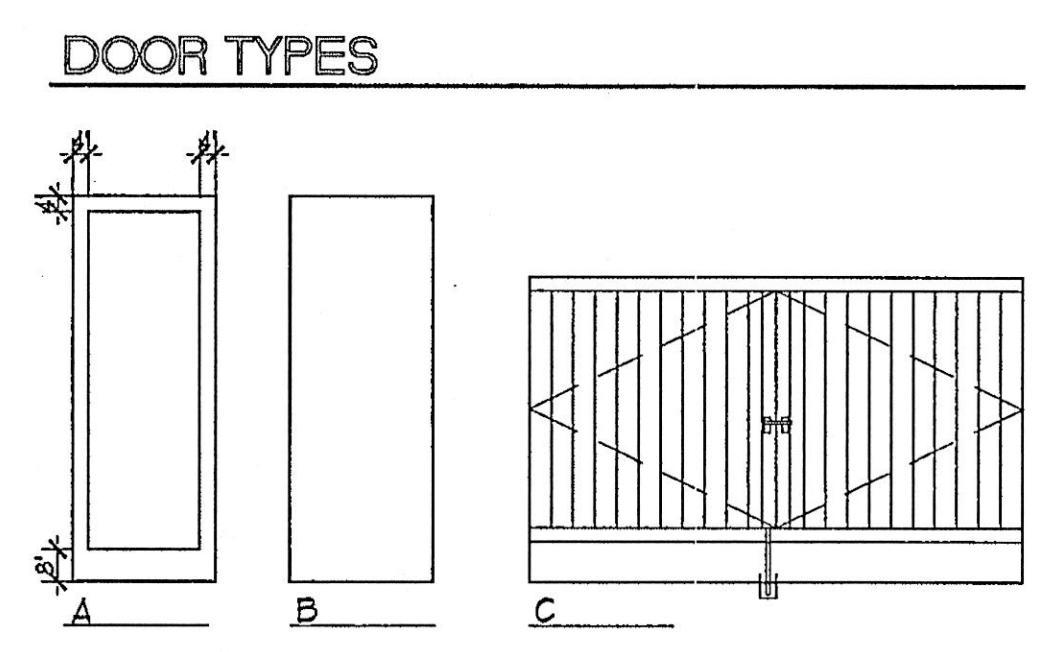
NO.	SIZE	MATERIAL		TYPE		HDW SET	REMARKS
		DOOR	FRAME	DOOR	FRAME		
001	3'-0" x 7'-0"	H1	H1	B	A	SET 5	NOTE 3
002	2'-6" x 3'-0"	-	-	-	-	-	NOTE 2,3

DOOR SCHEDULE NOTES:  
1. 20 MIN. RATED DOOR, FRAME, AND HARDWARE  
2. CONFIRM DOOR SIZE AND MATERIAL WITH DUNBAR/ATER MANUFACTURER  
3. 1 HOUR RATED DOOR, FRAME, AND HARDWARE

### HARDWARE SETS

SET 1	SET 2	SET 3	SET 4
2 CONT. HINGES	2 CONT. HINGES	2 CONT. HINGES	3 HINGES
2 OFFSET PULLS	2 OFFSET PULLS	2 OFFSET PULLS	1 STORAGE LOCKSET
2 CLOSERS	2 CLOSERS	2 FRENCH DOOR HARDWARE	1 CLOSER
1 THROUGH BOLT		2 FLOOR BOLTS	THRESHOLD
1 THRESHOLD WEATHERSTRIPPING		1 THRESHOLD WEATHERSTRIPPING	1 THRESHOLD WEATHERSTRIPPING

HARDWARE NOTES:  
1. VERIFY HARDWARE FUNCTIONS WITH OWNER  
2. ALL LOCKSETS AND KEYPED LOCKS TO BE KEYPED TO THE BLDG'S MASTER KEYING SYSTEM  
3. LATCHSETS TO BE SCHLAGE 'D' SERIES  
4. ALL LATCHSETS TO BE ADA COMPLIANT  
5. DOOR HARDWARE SHALL BE CAPABLE OF OPERATION WITH THE USE OF ONE (1) HAND AND SHALL NOT REQUIRE TIGHT FINCHING, TIGHT GRASPING OR TWISTING OF THE WRIST TO OPERATE. TURNBUSH DEADBOLTS ARE PROHIBITED, LEVER OR PADDLE DEADBOLT RELEASES ARE ACCEPTABLE  
6. DOOR THRESHOLD SHALL NOT EXCEED ONE-HALF INCH (1/2") IN HEIGHT, THRESHOLDS EXCEEDING ONE QUARTER INCH (1/4") IN HEIGHT SHALL HAVE A 1/2 BEVEL  
7. DOOR CLOSERS SHALL MEET OPENING FORCE AND SLEEP PERIOD REQUIREMENTS  
8. ALL HARDWARE TO BE SATIN CHROME FINISH OR PER OWNER



REVISIONS:  
 1. 02/07/07 - CITY COMMENTS  
 2. 07/07/07 - CITY COMMENTS  
 3. 02/02/08 - CITY COMMENTS

**AL & JOES DELI**  
 Congress Station, Crystal Lake, Illinois  
**BASEMENT FLOOR PLAN, SCHEDULES AND DETAILS**

**PARTNERS IN DESIGN**  
 ARCHITECTS  
 Ft. (641) 540-0300  
 Fax: (641) 540-1005  
 110 Lake Cook Road Suite 100  
 Deerfield, Illinois 60015

PROJECT NO.: 419.06.025  
 DRAWN BY: JHH CHECKED BY: UHB  
 DATE: 03.07.07  
 SHEET NO.: A3.0